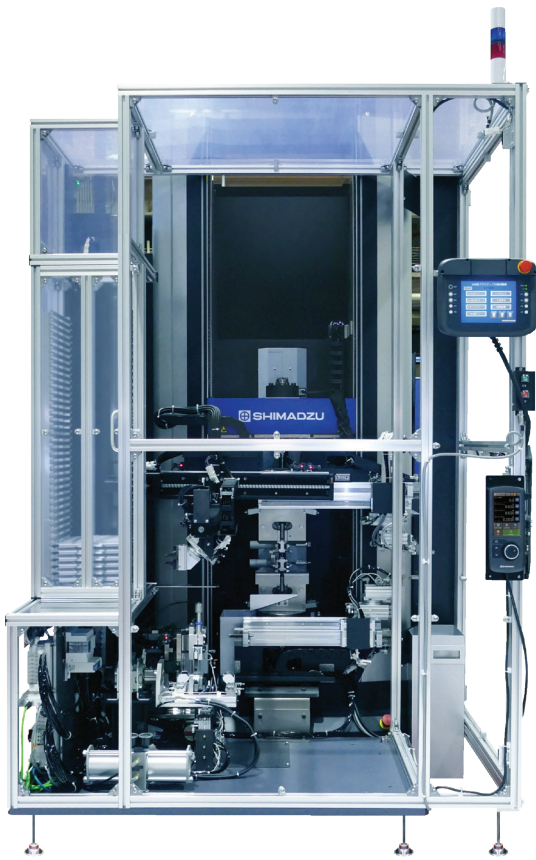


Shimadzu's Fully Automated Testing System For Plastics

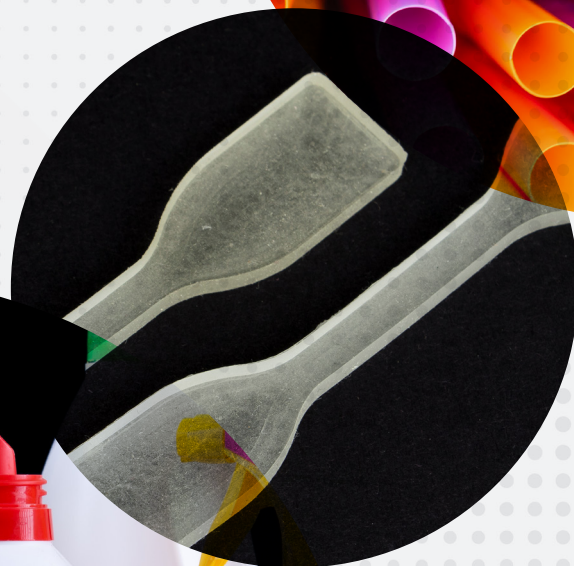
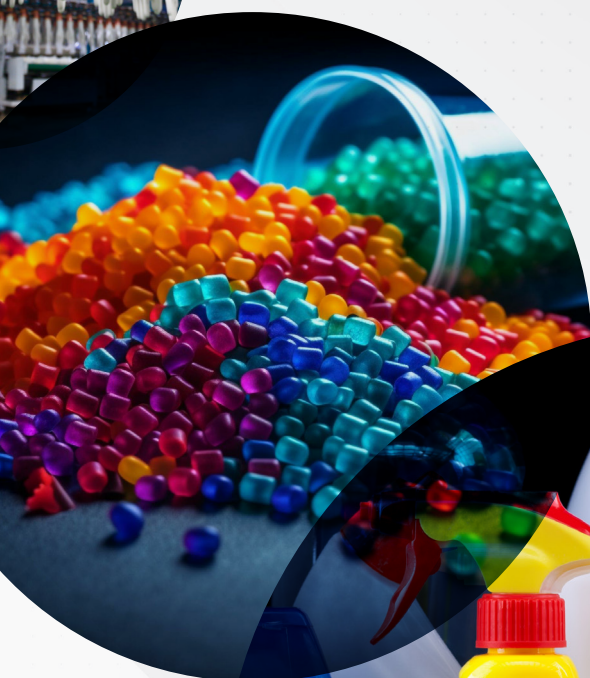


MEET YOUR NEW PARTNER IN LAB

With Shimadzu's latest automated system, plastic evaluation has never been easier. The robotic transfer arm can expertly handle test specimens on its own, accurately performing both tensile and bending tests in compliance with ISO/JIS. Capable of delivering up to 240 tests consecutively with high accuracy, the system delivers fast, consistent, and reliable results right from the first time.

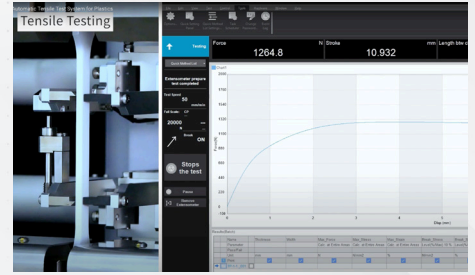
Wide Range of Applicable Materials

Materials that can be tested include semi-rigid or rigid plastic, thermoplastics, thermosets, elastomer, rubber, etc.



Setting New Standards in Plastic Evaluation

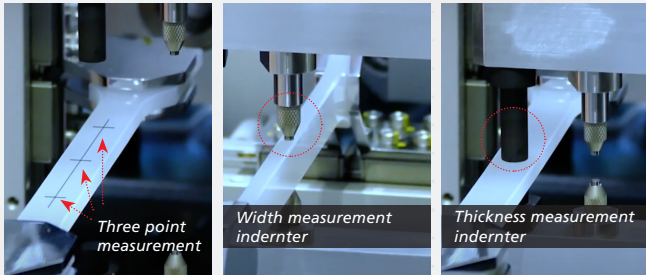
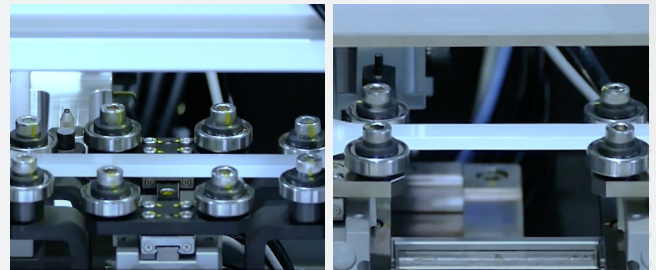
- Standard compliance: ISO 527, JIS K7162, ISO 178, JIS K7171
- 24/7 Operation with increased testing capacity and throughput
- Eliminates manual repetitive workflows
- Long-term costs savings
- Improved result accuracy, reproducibility and reliability
- Clear accountability and easy compliance
- Improved operation safety



Unique Features

Specimen Centre-Positioning Device

- Consistent placement and measurement enable high repeatability and reliability
- Accommodates a wide range of specimen sizes

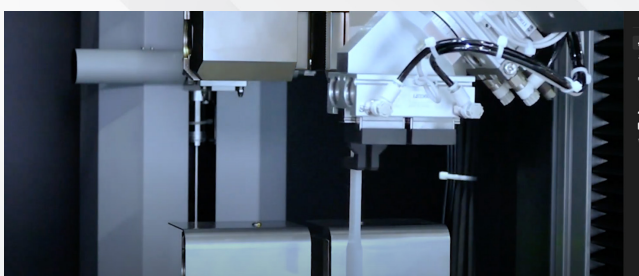


Automatic Specimen Dimension Measurement

- Single-point, three-points, and nine-points selections are available

Ease Of Data Analysis With TrapeziumX-V Software












- Schedule creation function available for 24/7 automatic operation



Specimen Gripping and Removal

- Pneumatic grips with variable gripping pressure
- Equipped with ejection device for specimen removal

EXPERIENCE WALKAWAY AUTOMATION

| Steps | Manual Testing Procedure | Shimadzu's Fully Automated Testing System For Plastics |
|----------------------------------------|-------------------------------------------------------------------------------------|---------------------------------------------------------------------------------------|
| Test Specimens Loading |  |  |
| Specimen Dimension Measurement |  |  |
| Specimen Attachment to Test Machine |  |  |
| Extensometer Attachment/Detachment |  |  |
| Test Execution |  |  |
| Data & Results Processing |  |  |
| Tested Specimen Removal and Collection |  |  |

See the automated testing procedure in action here





Shimadzu (Asia Pacific) Pte Ltd.

www.shimadzu.com.sg/an

For Research Use Only. Not for use in diagnostic procedures.

This publication may contain references to products that are not available in your country. Please contact us to check the availability of these products in your country.

Company names, product/service names and logos used in this publication are trademarks and trade names of Shimadzu Corporation or its affiliates, whether or not they are used with trademark symbol "TM" or "@". Third-party trademarks and trade names may be used in this publication to refer to either the entities or their products/services. Shimadzu disclaims any proprietary interest in trademarks and trade names other than its own.

The contents of this publication are provided to you "as is" without warranty of any kind, and are subject to change without notice. Shimadzu does not assume any responsibility or liability for any damage, whether direct or indirect, relating to the use of this publication.