

Brevis™ GC  
**EG DEG Analyzer**



## For the Analysis of Ethylene Glycol and Diethylene Glycol in Glycerin, Propylene Glycol, and Sorbitol via GC-FID (USP Monographs)

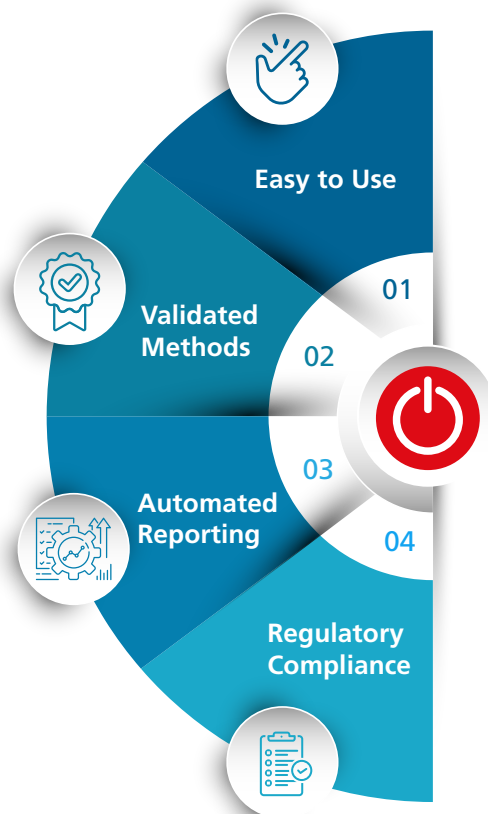
A turn-key solution, complete with chemicals, instruments, standard/sample preparation, analytical conditions, and software for operational and automated reporting.

- End-to-End workflow available
- Achieve precise determination of EG and DEG in pharmaceutical and food raw materials
- Simplifies instrument setup, analysis procedures, and compliance with regulatory requirements in QC labs
- Automatically generates test reports



Scan the QR code for more information on the Brevis GC

<https://www.shimadzu.com.sg/an/products/gas-chromatography/brevis-gc.html>





Complete SOP for the **end-to-end workflow solutions**

## Easy to Use

### Routine Analyzer

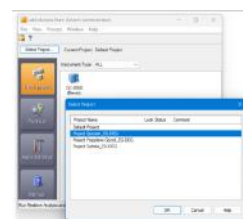
**End-to-end** workflow which comes complete with

- Standard Operating Procedure (SOP)
  - Sample preparation procedures
  - Software workflow for data analysis
  - Batch, method, and reporting templates
- Reagent list
- Consumables list

## Validated Methods

According to USP Monographs

- For glycerin, propylene glycol, and sorbitol sample matrices
- **Pre-optimized analytical conditions** to ensure best performance
- Users only need to select the project accordingly to change conditions
- Any parameters can be changed, if necessary



Select the ready projects for each raw material with analytical parameters optimized according to the respective **USP Monographs**

Report List of Glycerin, Propylene Glycol and Sorbitol in Glycerin					
Sample ID	Batch No.	Run No.	Peak Area	Peak Area Ratio	Result
GLY-1	GLY-1001	1001	1000000	100.000	Pass
GLY-2	GLY-1002	1002	1000000	100.000	Pass
GLY-3	GLY-1003	1003	1000000	100.000	Pass
GLY-4	GLY-1004	1004	1000000	100.000	Pass
GLY-5	GLY-1005	1005	1000000	100.000	Pass
GLY-6	GLY-1006	1006	1000000	100.000	Pass
GLY-7	GLY-1007	1007	1000000	100.000	Pass
GLY-8	GLY-1008	1008	1000000	100.000	Pass
GLY-9	GLY-1009	1009	1000000	100.000	Pass
GLY-10	GLY-1010	1010	1000000	100.000	Pass

Pre-set criteria for the **automated calculation and reporting** can be changed, if necessary

## Automated Reporting

with Shimadzu MultiData Reporting (MDR)

- Checking of analytical results with **automatic pass/fail judgement**
  - System suitability test
  - QC closing standard
  - Tested sample final results based on USP monograph acceptance criteria
- Validation supported by Shimadzu Informatics team

## Regulatory Compliance

with LabSolutions DB/CS

With an expansion of data integrity requirements around the world, the regulation is getting more stringent with each updated version. We continuously upgrade software security policies to keep up with current regulatory requirements.

- **Data protection and privacy** from unauthorized access
- **Records retention** from data loss with automatic backups
- **Data integrity and authenticity** in accordance to regulations such as FDA 21 CFR Part 11



Shimadzu (Asia Pacific) Pte Ltd.  
[www.shimadzu.com/an/](http://www.shimadzu.com/an/)

**For Research Use Only. Not for use in diagnostic procedures.**

This publication may contain references to products that are not available in your country. Please contact us to check the availability of these products in your country.

Company names, product/service names and logos used in this publication are trademarks and trade names of Shimadzu Corporation or its affiliates, whether or not they are used with trademark symbol "TM" or "®". Third-party trademarks and trade names may be used in this publication to refer to either the entities or their products/services. Shimadzu disclaims any proprietary interest in trademarks and trade names other than its own.

The contents of this publication are provided to you "as is" without warranty of any kind, and are subject to change without notice. Shimadzu does not assume any responsibility or liability for any damage, whether direct or indirect, relating to the use of this publication.