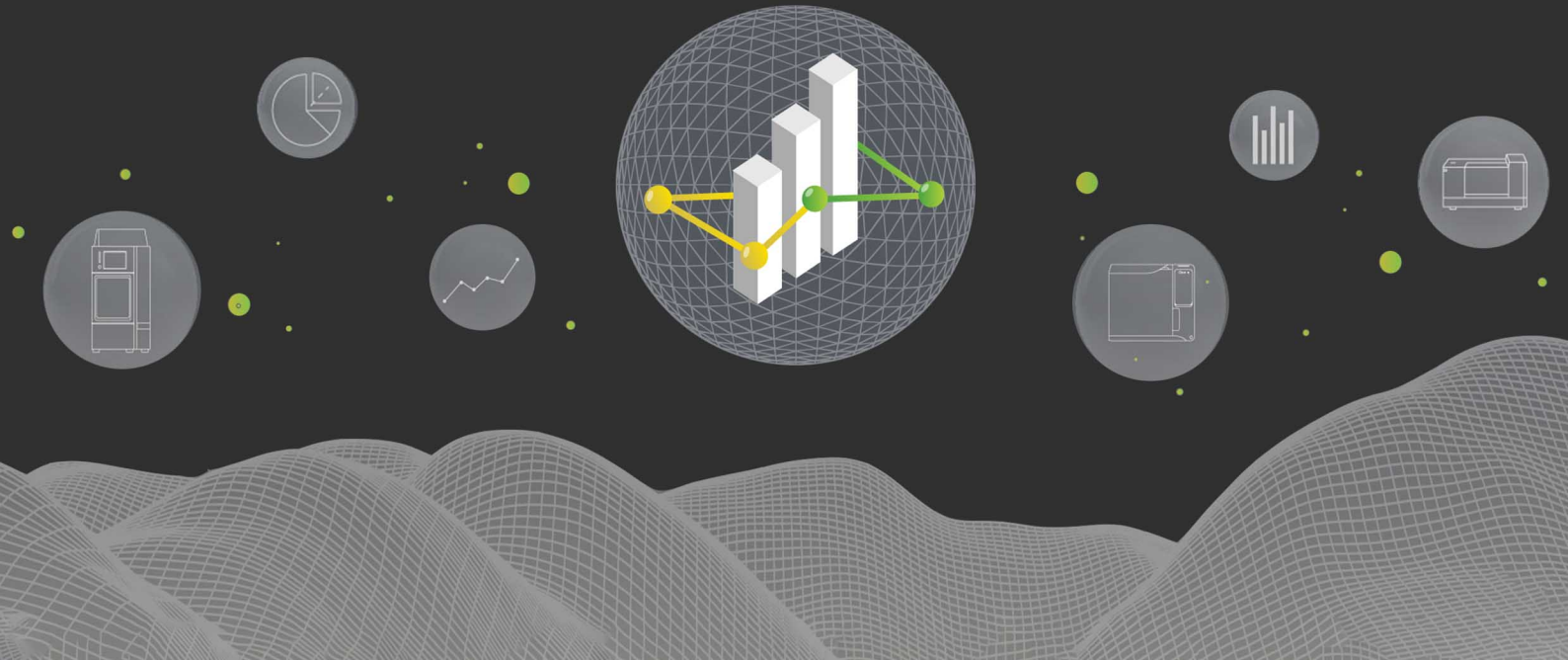


LabSolutions **BiX**

Analytically Intelligent

Brilliant I llume I eXpanse

LabSolutions BiX is a Brilliant application that Illumes greater possibilities of performance of your laboratory and enables to spread your Enterprise Digital Footprint to greater eXpanse.



Analytically Intelligent

LabSolutions BiX is the first-of-its kind web-based dashboard application that enables diverse category of users (lab chemists, managers or senior management & CXOs) to make informed decisions based on detailed and critical analysis of the productivity and efficiency of all assets in the laboratory, be it instruments or the people operating them.

The Analytically Intelligent LabSolutions BiX collects data from all kinds of Analytical instruments, processes the data Analytically or logically and showcases the analysed output into various Analytics reports.

LabSolutions BiX offers advanced analytics at your fingertips and is built on a robust Micro-Service Architecture (MSA) and features responsive intuitive display and Progressive Wave Application (PWA) that provides valuable insights along with complete ease of use.

How **BiX** will transform your laboratory experience?

- **Brilliant** - LabSolutions BiX offers a brilliant experience to all users, especially lab chemists, to enrich their day-to-day laboratory activities.
- **illume** - LabSolutions BiX provides accurate and timely laboratory analytics that enables managers to illuminate greater possibilities of instruments and users performance.
- **eXpanse** - LabSolutions BiX spreads the digital footprint of laboratories, enabling senior management and CXOs to make better business decisions.



01 April 2019 to 01 April 2021



10475.998 hrs
Instrument Usage



35
Active Users



35
Active Instruments



39602
Samples Analyzed

Instruments

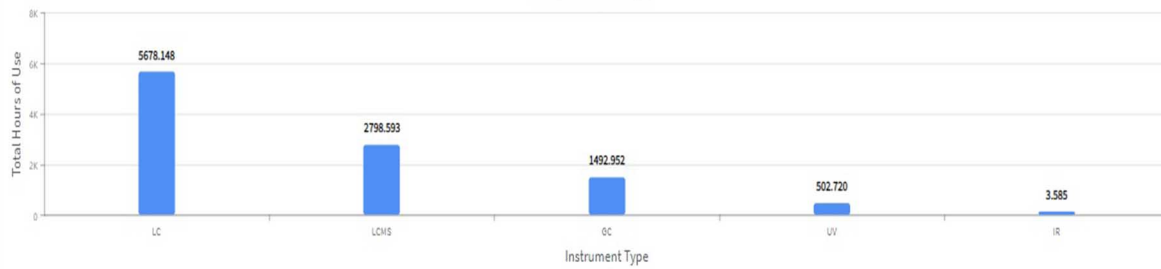
Users

Messages

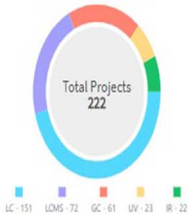
System

Expected Hours of Use: 17568.000

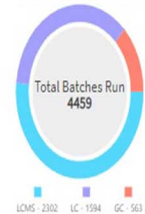
Hours Used for Instrument Type



Projects for Instrument Type



Batches Run for Instrument Type



Samples Tested for Instrument Type

Injections for Instrument Type

Brilliant - A brilliant experience to enrich your laboratory

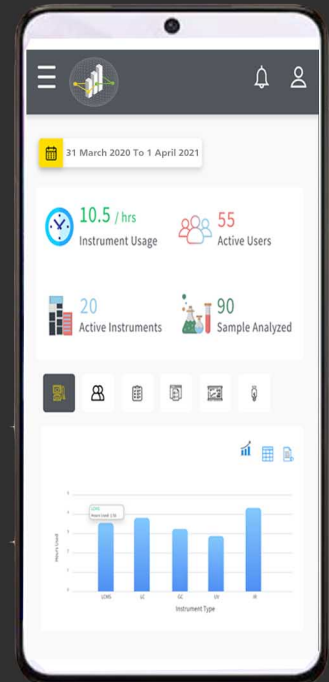
LabSolutions BiX offers a brilliant experience with its interactive interface and web-based architecture. Data is collected automatically, computed logically and showcased asthetically as interactive dashboards to provide ease of use to even the most novice users.

Features:

- Intuitive Graphical User Interface (GUI).
- Web-based application with Micro-Service Architecture (MSA).
- Interactive Product Tour & Informative Reporting.

Benefits:

- "What You See Is What You Get" interface enables multi-tasking and offers considerable ease of use to even novice or non-technical staff.
- Users can login to LabSolutions BiX from anywhere in the world and also work from home using secured access, from any smart device (PC, Tablet or Phone etc), whether it is iOS or Android.
- While new users experience a confident onboarding with the help of a simple walkthrough by the interactive Product Tour, more seasoned users have the ability to generate dashboard specific reports in diverse formats as per their needs.

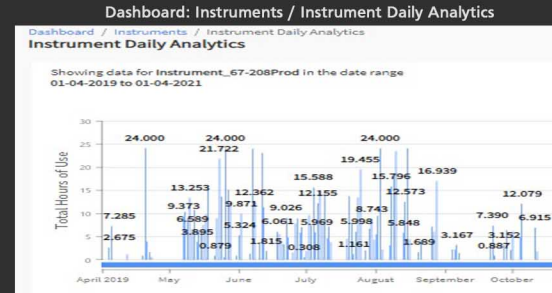
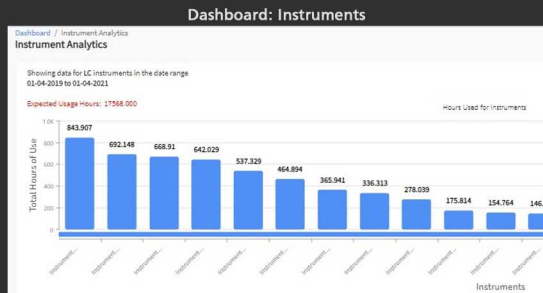


illume - *Illuminate greater possibilities of performance with accurate and timely laboratory analytics*

LabSolutions BiX provides accurate and timely laboratory insights via multiple dashboards featuring instrument utilisation, user loads for batch sample analysis, and important messages including errors and warnings and system management activities. Audit Trail review helps managers to monitor and verify the quality and reliability of data to address Data Integrity concerns.

Features:

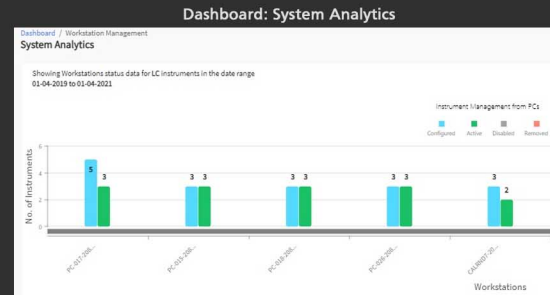
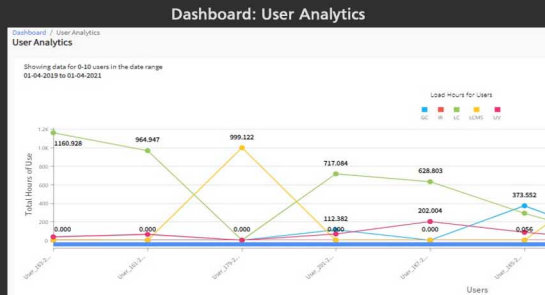
- Accurate lab insights provides detailed analytics of Instrument utilisation, User activities and Samples analysed, Batches run, Project load among others.
- Audit review function simplifies analysis of huge data & related logs.
- Real-time Notifications and Messages prompt you to focus on the important tasks.



illume - Illuminate greater possibilities of performance with accurate and timely laboratory analytics

Benefits:

- Detailed accurate data insights about the laboratory and user performance helps to better manage resources and also allocate them accordingly for various projects thus leading to optimum utilisation.
- Audit Review function displays key metrics and metadata about Method, Batch, Manual Integration, System Admin etc in a single viewing tool, to help the user face regulatory challenges with confidence.
- System management dashboard helps the IT team to effectively monitor and administer the laboratory software systems.



eXpanse - Spread the digital footprint of your laboratories

LabSolutions BiX enhances the performance of your laboratory and gives you the opportunity to spread your Enterprise Digital Footprint across a greater expanse, to a wide variety of instruments and software applications.

Features:

- Enhance your LabSolutions CS network with powerful analytics and other modules/applications.
- Connect with various analytical instruments and laboratory software.
- Expand and connect your analytics to multiple laboratories and locations.

Supported Shimadzu Instruments:
HPLC, GC, LCMS, UV, FTIR.

Supported Shimadzu Software:
LabSolutions CS, LabSolutions DB, LabSolutions
LCGC, LabSolutions LCMS.



expanse - Spread the footprint of your laboratory and its analytics

Benefits:

- Powerful visualisation and quick dashboards of big metadata from the LabSolutions CS network helps in making performance-based business decisions.
- An enterprise solution that can be scaled with diverse analytical instruments, software and modules to improve productivity of laboratories and ensure business continuity.
- Addresses the growing needs of customers to expand their enterprise digital footprint to multiple locations with cost-effective operations.



Customer Testimonials



"I would like to congratulate Shimadzu for their new brilliant software.

LabSolutions BiX gives us the power to keep an accurate track on instrument and staff performance even as we Work from Home. We are particularly happy to have powerful visualisation and quick dashboards, which help us to make performance-based business decisions."

- Mr Reza H Ismail, Managing Director, Nori Pharma, Malaysia



"As a testing lab we are always reliant on accurate data and LabSolutions BiX helps us to precisely show the status of our laboratories. We are very impressed with the expandable modules as our labs are always evolving. We can easily expand our digital footprint using this software. We are also very thrilled to use the intuitive GUI, which certainly enriches our total laboratory experience."

- Mr Chandra Sekhar, President, Perfomics Analytical Labs, India

www.LabSolutionsBiX.com

www.shimadzu.com.sg/labsolutionsbix



LabSolutions BiX

Analytically Intelligent

Brilliant I illume I eXpanse



Shimadzu (Asia Pacific) Pte Ltd

www.Shimadzu.com.sg/an

For Research Use Only. Not for use in diagnostic procedures.

This publication may contain references to products that are not available in your country. Please contact us to check the availability of products in your country.

The content of this publication shall not be reproduced, altered or sold for any commercial purpose without the written approval of Shimadzu. Company names, products/-service names and logos used in this publication are trademarks and trade names of Shimadzu corporation, its subsidiaries or its affiliates, whether or not they are used with trademark symbol "TM" or ®. Third-party trademarks and trade names may be used in this publication to refer to either the entities or their products/services, whether or not they are used with trademark symbol "TM" or ®. Shimadzu disclaims any proprietary interest in trademarks and trade names other than its own.

The information contained herein is provided to you "as is" without warranty of any kind including without limitation warranties as to its accuracy or completeness. Shimadzu does not assume any responsibility or liability for any damage, whether direct or indirect, relating to the use of this publication. This publication is based upon the information available to Shimadzu on or before the date of publication, and subject to change without notice.