



GLOBAL CUSTOMER  
**TESTIMONIALS**

EACH & EVERY ONE  
OF OUR CUSTOMERS IS A  
**SUCCESS  
STORY...**

---

# 02

---

**INTRODUCTION** 04

---

# 06

---

## ACADEMIA & RESEARCH

Johns Hopkins University School of Medicine	08
Monash University	09
University of Texas at Arlington	10
University of Illinois at Chicago	11
University of Messina	12
University of St. Andrews	13
National University of Singapore	14
Nanyang Technological University	15
Singapore University of Technology and Design	16
University of Oxford	17
University of Florence	18
Philippine Institute for Pure and Applied Chemistry (PIPAC)	19
Vietnam National University	20
Marathwada Institute of Technology	21
Key Laboratory of New Drugs and Non-Clinical Drug Metabolism Research	22
Research Center for Eco-Environmental Sciences, Chinese Academy of Sciences	23
University of Campinas	24

---

# 26

---

## CONTRACT RESEARCH ORGANIZATION (CRO)

Synchron Research Services Pvt Ltd	28
Veeda Clinical Research Pvt Ltd	29

---

# 30

---

## ENVIRONMENT & FOOD

IRCCS – Istituto Mario Negri	32
Vegetable Quality Supervision, Inspection and Testing Center	33
Agro-Environmental Quality Control & Testing Center	34
National Research Center for Environmental Analysis and Measurement	35
Environmental Monitoring Center of Heilongjiang	36
Zhejiang Academy of Agricultural Sciences	37
Hebei Entry-Exit Inspection and Quarantine Technical Center	38

# CONTENTS

---

## 40

---

### FORENSIC

The Forensic Experts Group	42
National Forensic Science Laboratory	43

---

## 44

---

### MATERIAL

Vimta Labs Ltd	46
PI Industries Ltd	47
JDM Scientific Research Organization	48
Kaneka Singapore Co. (Pte) Ltd.	49
Petrochemical Corporation of Singapore (Private) Ltd	50
TÜV Rheinland Vietnam Co., Ltd.	51

---

## 52

---

### PHARMACEUTICAL

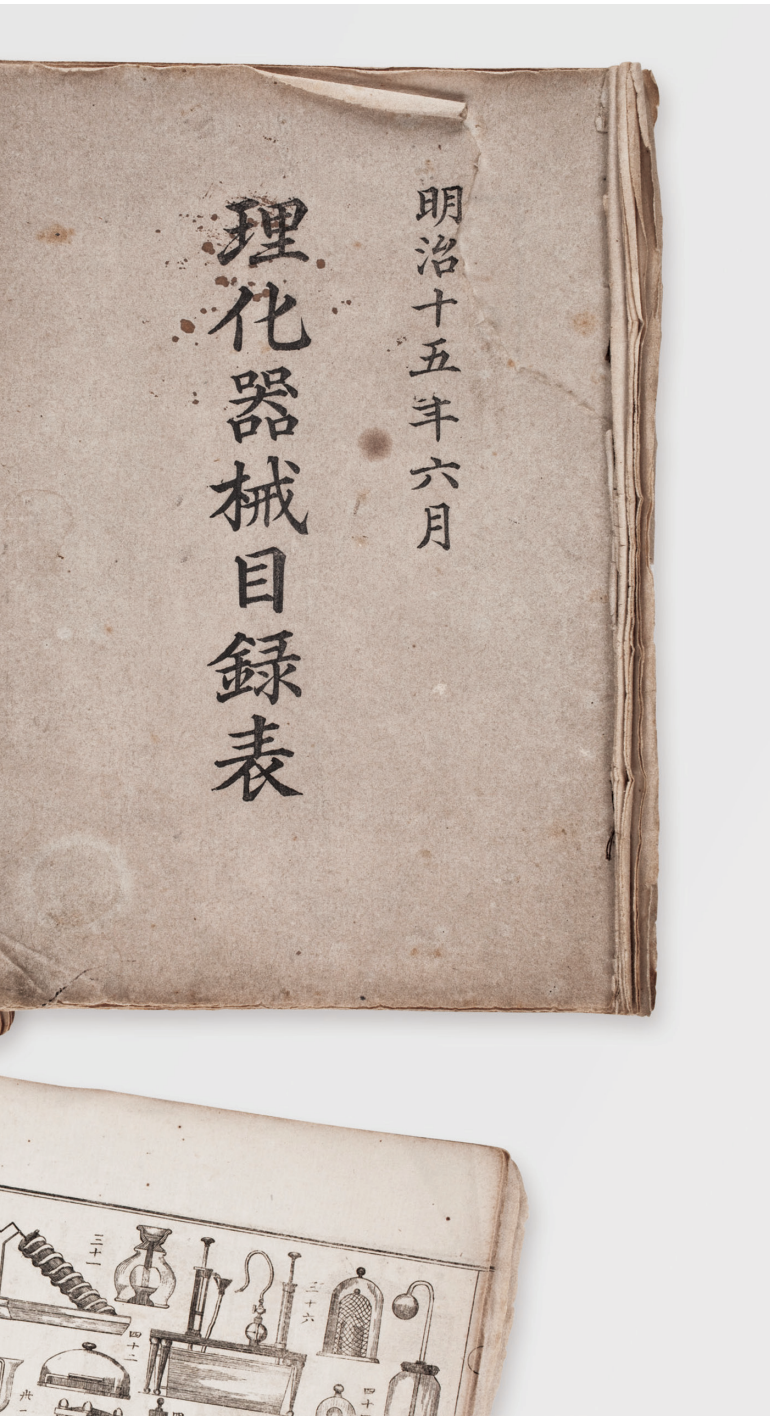
Mitsubishi Tanabe Pharma Corporation	54
Bankyo Pharmaceuticals Pvt Ltd	55
ASolution Pharmaceuticals Pvt Ltd	56
Strides Shasun Limited	57
Divis Laboratories Ltd	58
Lupin Limited	59
Brookes Pharma (Private) Limited	60
Anthem Biosciences Private Limited	61
Gland Pharma Limited	62
ATCO Laboratories Limited	63
Berlin Pharmaceutical Industry Co., Ltd.	64
Ministry of Health, Vietnam	65
PT. Interbat Pharmaceutical Industry	66
Nepal Pharmaceuticals Laboratory Pvt. Ltd.	67
PT Taisho Pharmaceutical Indonesia Tbk.	68
Avra Laboratories Pvt Ltd	69

AFTER MORE THAN 140 YEARS,  
IT IS APT TO PAUSE, REFLECT AND  
TAKE STOCK OF THOSE WHO  
HAVE MADE OUR INCREDIBLE  
JOURNEY POSSIBLE:

**YOU.**



Science Equipment Catalogue List, oldest product catalogue in SHIMADZU's archives.



SHIMADZU Foundation Memorial Hall is home to a product catalogue, the last of its kind still in existence today. The Science Equipment Catalogue List, published in 1882, details with illustration, 110 types of laboratory equipment. This single item is the epitome of our founder's passion for science.

Despite his lack of knowledge or experience, Genzo Shimadzu Sr. was never deterred from taking on a daunting challenge: Do Good for Society. He humbly learned from college professors who gave him access to the library, where he amassed extensive knowledge and skills. Gifted with nimble fingers, he became a manufacturer of laboratory equipment in Kyoto soon after.

Today, SHIMADZU Corporation is a global enterprise with diversified business operations and a Nobel laureate in its fold. These incredible achievements are attributable to Shimadzu's enduring spirit of grit, astuteness and its humble willingness to learn from others, namely our customers. After more than 140 years, it is apt to pause, reflect and take stock of those who have made our incredible journey possible: You.

You are the reason SHIMADZU can deliver first-class products to the world and why we have produced this book - It is dedicated to you. We wanted to record, acknowledge, applause and show our utmost appreciation to our customers, especially the ones who share our passion for "Excellence in Science". This book is a representative profile of our customers from around the world together with their scientific pursuits.

If you have not used a SHIMADZU instrument, but possess the unquenchable desire to "Contribute to Society Through Science and Technology", we invite you to join our ranks. Together we can make this planet a better place.

We invite you to visit the SHIMADZU Foundation Memorial Hall to have a closer look at our priceless memorabilia while immersing yourself in SHIMADZU's rich heritage.

■ **'EXCELLENCE IN SCIENCE'**  
**IS NOT JUST OUR MOTTO BUT OUR WAY OF LIFE.**

# ACADEMIA & RESEARCH



# DRIVING THE FUTURE OF SCIENCE

■ THROUGH SUCCESSFUL PARTNERSHIPS  
WITH THE BEST SCIENTISTS & RESEARCHERS  
ACROSS THE GLOBE.



“

SHIMADZU's instruments like the AXIMA Resonance provide high mass accuracy and resolution in the peaks. In addition to high precision and reliability, it enables a sample to be analyzed sequentially, with each fragment providing more minute details, be it glycan modifications, sialic acid content or other characteristics. SHIMADZU instruments are unique.

”

FOR COMPLICATED THINGS  
WITH SMALL DIFFERENCES IN STRUCTURE,  
THEY ARE THE BEST.

**DR. DANIEL W. CHAN**  
DIRECTOR

Clinical Chemistry Division,  
Johns Hopkins University School of Medicine  
USA

**MS. MICHELLE MCINTOSH**  
ASSOCIATE PROFESSOR

Drug Delivery, Disposition and Dynamics,  
Monash Institute of Pharmaceutical Sciences,  
Monash University  
Australia

“

Since 2006, my research program which develops improved drug delivery systems has benefitted from the reliability and sensitivity of SHIMADZU's HPLC and UHPLC systems, often in combination with their LCMS and LCMSMS mass spectrometers.

The HMSTrust Analytical Laboratory and the bespoke teaching laboratory in Monash University were both established in partnership with SHIMADZU. The wide range of SHIMADZU chromatography and mass spectrometry systems therein has provided **WORLD-CLASS TRAINING** for hundreds of our undergraduates & postgraduate students; post-doctoral researchers and even start-up companies as well.

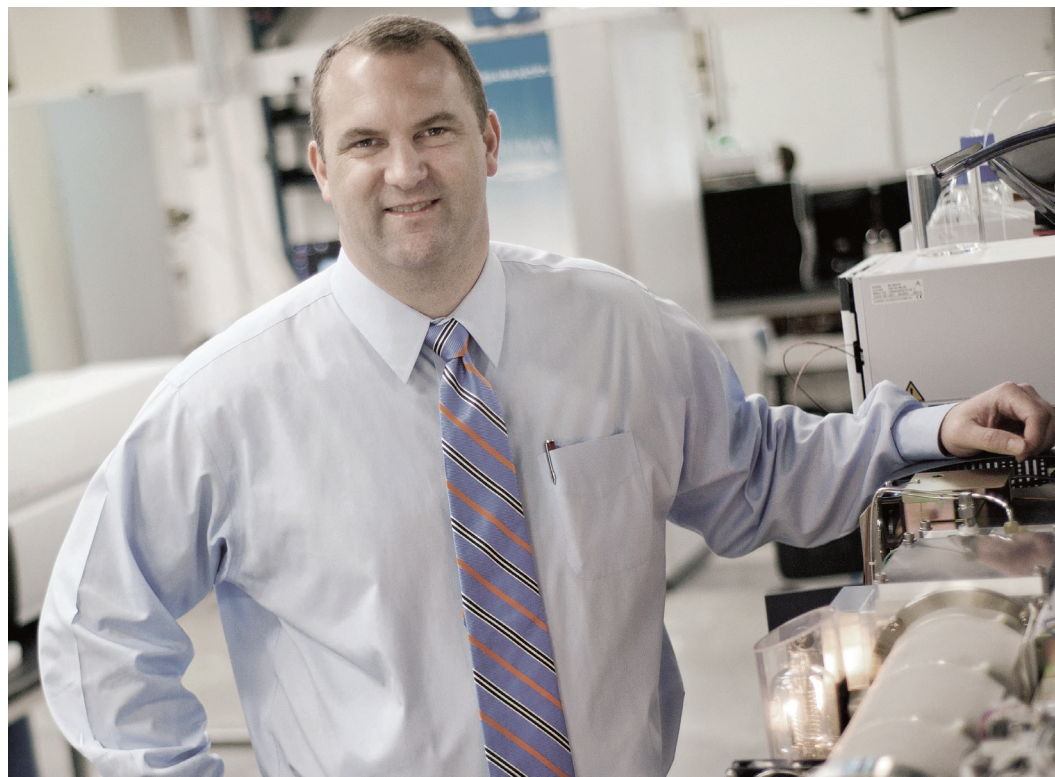


”

“

My interactions with SHIMADZU began way back in 2000, when I was a graduate student at Virginia Tech. Our analytical group, headed by Prof. Harold McNair, regularly administered American Chemical Society short courses in gas chromatography, liquid chromatography, sample preparation and other topics. I completed my dissertation research on the topic of adduct ion formation in electrospray ionization, using a SHIMADZU QP-8000a single quadrupole mass analyzer. In 2007, when I joined the faculty at the University of Texas at Arlington (UTA), we acquired an LCMS-IT-TOF through the SHIMADZU Equipment Grants for Research Program. It was one of a handful of such systems available in the country, so **WE HAD A UNIQUE OPPORTUNITY TO PERFORM CUTTING EDGE RESEARCH THAT OTHERS COULD NOT**, based on the powerful features of the instrument. Soon after, we established the SHIMADZU Center for Advanced Analytical Chemistry and the SHIMADZU Institute for Research Technologies at UTA.

”



**DR. KEVIN A. SCHUG**  
DIRECTOR

Department of Chemistry & Biochemistry,  
University of Texas at Arlington  
**USA**

**DR. RICHARD B. VAN BREEMAN**  
PROFESSOR

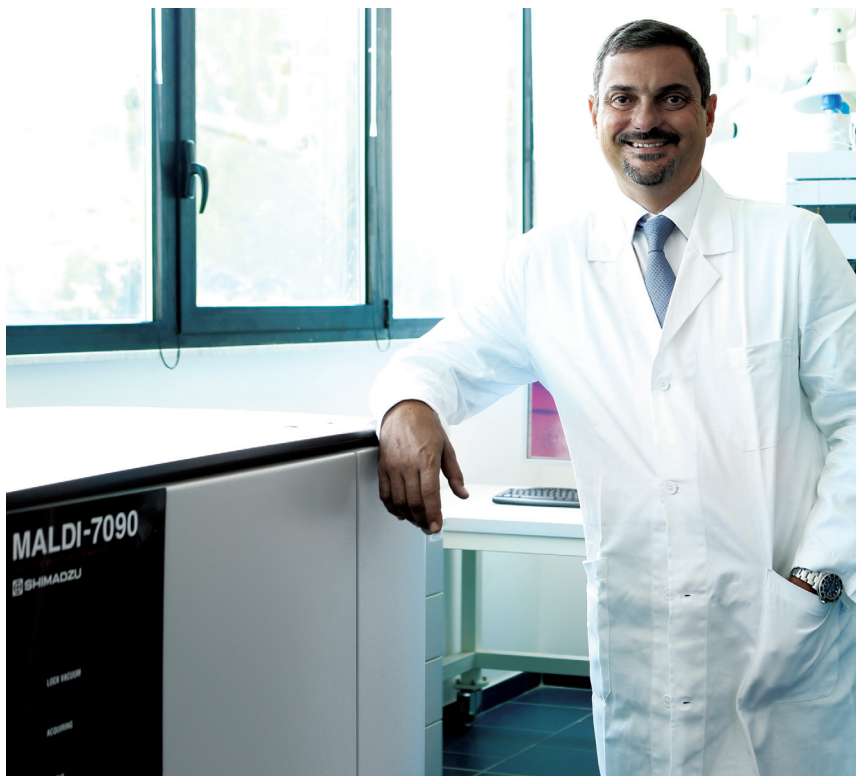
College of Pharmacy,  
University of Illinois at Chicago  
**USA**



“

SHIMADZU has been a leader in HPLC and UHPLC technologies for many years, providing reliable high performance instruments and quality service support. SHIMADZU OFFERS THE HIGHEST PERFORMANCE AND FEATURES that are not available from most vendors due to their innovation. Also, SHIMADZU's high resolution IT-TOF mass spectrometer offers MS capabilities not obtainable with QqTOF instruments. SHIMADZU is also a leader of the world when it comes to fast triple quadrupole mass spectrometer technology and boasts the fastest scanning speeds and the most sensitive LCMS. We are very happy to work with SHIMADZU.

”



**PROFESSOR LUIGI MONDELLO**  
FULL PROFESSOR OF ANALYTICAL CHEMISTRY  
Pharmaceutical Chemistry and Health Products Department,  
University of Messina  
Italy

“

Over the 20 years of fruitful collaboration with SHIMADZU, I have conducted several successful research projects with their innovative and fast GC instruments. Their development of dedicated software and data tools helped to glean useful information from the complex data sets driven by the multidimensional techniques and for unique identification of unknown compounds. SHIMADZU MDGC/GCMS system proved to be very useful for the separation of allergens in perfume formulation where its distinctiveness is the isolation of discrete amounts (up to 1 mg) of high purity (>95%) trace-level constituents, not available as commercial standards. SHIMADZU HAS BEEN AN EXCEPTIONALLY RELIABLE PARTNER throughout our years of collaboration and I look forward to the continuous support from them.

”

**PROFESSOR ANDY SMITH**

PROFESSOR OF ORGANIC CHEMISTRY &amp; CATALYSIS

University of St. Andrews

**United Kingdom**

The School of Chemistry at St. Andrews features a dynamic research environment. St. Andrews is the lead partner of the EPSRC Centre for Doctoral Training in Critical Resource Catalysis, CRITICAT. This comprehensive PhD training programme is a unique, world-leading training and research environment founded on the shared scientific excellence in catalysis of the three proximate centres of research at St. Andrews, Edinburgh and Heriot-Watt.

THIS EXCELLENCE IN RESEARCH IS FACILITATED BY  
STATE-OF-THE-ART FACILITIES THAT INCLUDE  
A RANGE OF ANALYTICAL INSTRUMENTS RANGING  
FROM HPLC, GC AND INFRARED SPECTROMETERS  
SUPPLIED BY SHIMADZU.





**PROFESSOR LEE HIAN KEE**  
DEPUTY HEAD

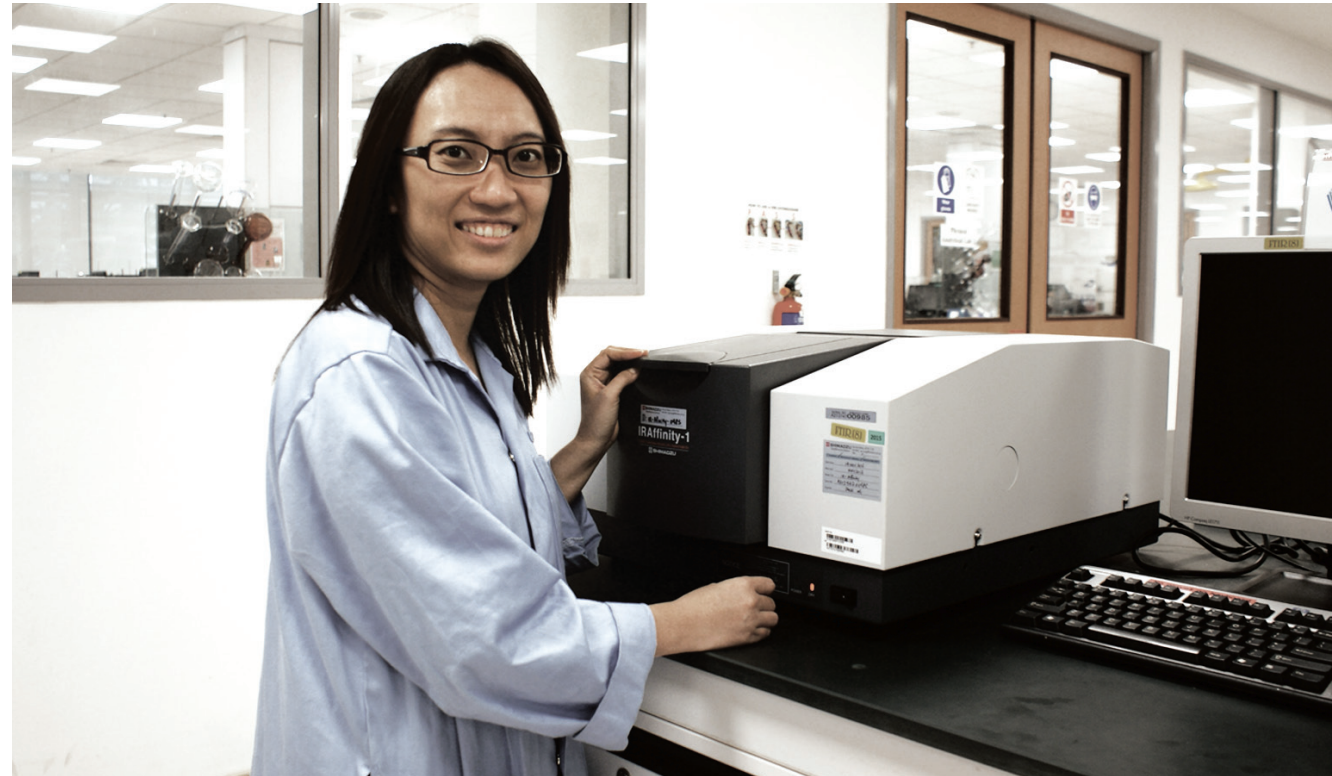
Department of Chemistry,  
National University of Singapore  
**Singapore**

“

We have been using SHIMADZU GC-MS and LC-MS systems for the past 20 years, and they have always been representative of state-of-the-art technology in the field for our applications primarily in, but not limited to, environmental analysis. **WE HAVE ALWAYS FOUND SHIMADZU GC-MS AND LC-MS SYSTEMS TO BE A STEP OR TWO AHEAD OF THE COMPETITION.** Their systems are reliable, high-performing and have been invaluable in our efforts to be a world-leading laboratory on miniaturized sample preparation development. Furthermore, SHIMADZU's service is responsive, prompt, efficient and effective.

”

**MS. SEOW AI HUA**  
LABORATORY MANAGER  
SPMS-CBC Teaching Lab,  
Nanyang Technological University  
Singapore



“

The service engineers in SHIMADZU are very helpful and prompt in assisting us in technical support. In particular, we would also like to take this opportunity to thank all the service engineers who have helped us in one way or another. As for application chemists, we have received great help from them as well.

THUMBS UP FOR THE SERVICE ENGINEERS  
AND APPLICATION CHEMISTS FROM SHIMADZU!

”

“

SHIMADZU instruments are highly suitable for academic labs and that is why they are **ONE OF OUR FAVORITES WHEN CONSIDERING STATE-OF-THE-ART ANALYTICAL INSTRUMENTS.**

They are not only easy to operate, but also help the students understand the basics. SHIMADZU instruments showcase modern features that are easy to troubleshoot and capable of catering to modern applications.

”

**DR. ONG ENG SHI**  
LECTURER

Singapore University of Technology and Design  
**Singapore**



**DR. FABRICE BIREMBAUT**  
PHYSICAL CHEMISTRY TEACHING LABORATORY MANAGER  
Department of Chemistry,  
University of Oxford  
United Kingdom

“

The practical component of our courses aims to equip students with the skills and problem solving abilities that they will need both in the final research year of their degree and in their future careers. The courses are updated regularly to ensure that experiments illustrate modern real-world applications of chemistry. Oxford works with companies including SHIMADZU to provide our students with

ACCESS TO THE WORLD'S LEADING  
AND STATE-OF-THE-ART INSTRUMENTS.

”



SHIMADZU UK team — University of Oxford team



**PROFESSOR GIANCARLO LA MARCA**  
ASSOCIATE PROFESSOR OF CLINICAL CHEMISTRY  
Department of Experimental and Clinical Biomedical Sciences  
University of Florence  
Italy

“

Tandem mass spectrometry (MS/MS) has become a leading technology used in clinical chemistry and has shown to be particularly sensitive and specific when used in new-born screening (NBS) tests. SHIMADZU mass spectrometer permits a very rapid measurement of many metabolites in different biological specimens by using filter paper spots or directly on biological fluids. SHIMADZU instruments offer high sensitivity and accuracy detection in NBS tests which enables us to identify possible treatable metabolic disorders especially when asymptomatic, and the benefits gained by this type of screening is now recognized worldwide.

A NOBLE CONTRIBUTION FROM SHIMADZU.

”

“

SHIMADZU has been a key partner in our organization's growth and operations. SHIMADZU's products have been meeting the expectations needed and the standards set by our laboratory. **THE SENSITIVITY, ACCURACY, AND REPRODUCIBILITY OF THEIR INSTRUMENTS ARE ON PAR WITH, AND AT TIMES EVEN BETTER THAN OTHER PLAYERS IN THE MARKET.**

In addition, they are also robust and reliable resulting in minimal downtime in our analyses. SHIMADZU is able give us cost-effective solutions which meet the requirements of our lab and our clients. SHIMADZU's support has also been top-notch.

Their various teams are able to deliver outstanding performance and have been our partners in our endeavors. The applications group has been valuable in their end-user education and have also been assisting us in developing new testing methods for various industries. PIPAC and SHIMADZU have also had several tie-ups, oftentimes with some of the resource-speakers coming from SHIMADZU. These have been aimed at educating both technical and non-technical individuals.

”



**DR. MODESTO T. CHUA**  
INSTITUTE DIRECTOR

Philippine Institute for Pure and Applied Chemistry (PIPAC)  
**The Philippines**

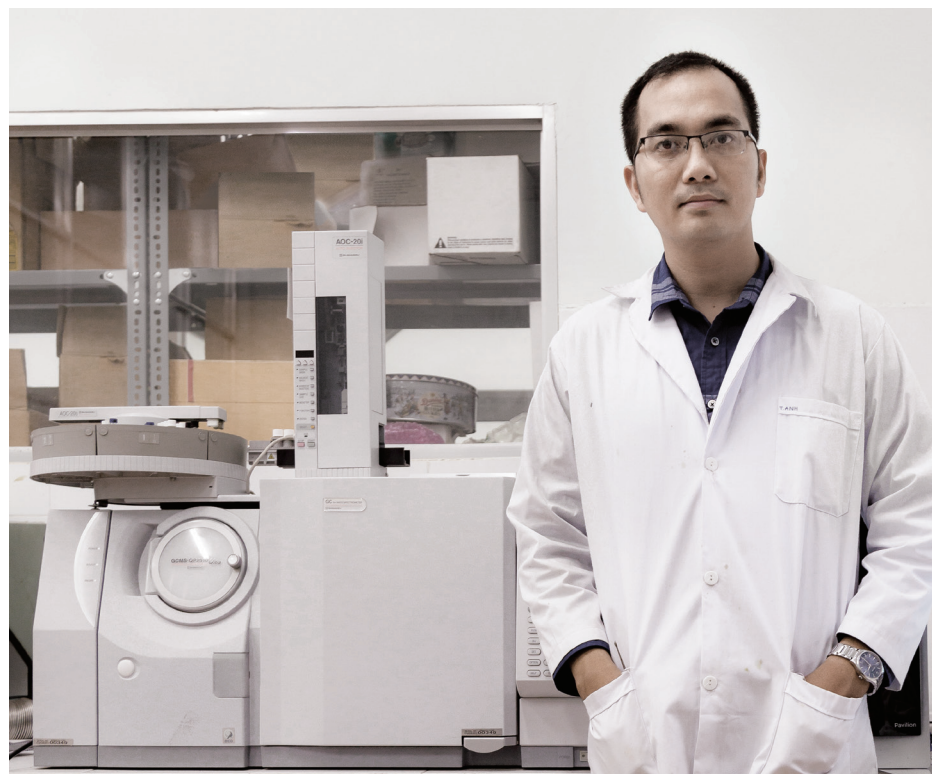
“

Being an academic organisation, we have limited budget for instruments. We presently use SHIMADZU GCMS-QP2010. We choose SHIMADZU because they provide **THE BEST RETURN ON INVESTMENT** and their instruments are very easy to operate. SHIMADZU's application support and service support are also of excellent quality. We would like to recommend SHIMADZU to anyone who is looking for the best in quality and performance.

”



**DR. TRUONG VU THANH**  
DEPUTY HEAD, NATIONAL KEY LABORATORY  
IN MATERIAL ANALYSIS AND CATALYSIS  
Department of Chemical Engineering,  
University of Technology,  
Vietnam National University, Ho Chi Minh  
**Vietnam**





“

SHIMADZU TECHNOLOGY IS EXCELLENT. We have organized several seminars & workshops for students & faculties within and outside our institute, and have always received good feedback for SHIMADZU instruments. We also received very positive feedback from our valuable customers regarding SHIMADZU instruments. SHIMADZU instruments make analytical and thermal characterization of the material easily possible and are thus helpful in carrying out various kinds of research activities. We are particularly impressed by certain features like the user-friendly software, reduced analysis time, easy sample preparation and good reproducibility. Furthermore, SHIMADZU's customer support & technical services are excellent. All the service engineers and analysts are very supportive in solving all our queries related to the instruments hardware as well as the software.

”

**PROFESSOR MUNISH SHARMA**  
DIRECTOR GENERAL  
Marathwada Institute of Technology  
India

**DR. WANG YAN**

PROFESSOR

Key Laboratory of New Drugs and Non-Clinical Drug Metabolism Research

China



“

SHIMADZU fully satisfies our scientific research requirements in terms of detection sensitivity and stability with the LCMS-8050. The user-friendly software design allows our laboratory personnel to be quickly trained in mastering the instruments' basic functions. SHIMADZU's after-sales technical service team has always responded promptly to the problems we encountered in our experiments. We value the high performance of SHIMADZU's LCMS-8050 and are pleased with the software operability and after-sales technical service.

”

WE WILL NOT HESITATE TO ENTER INTO A LONG-TERM COLLABORATION  
WITH SHIMADZU TO ESTABLISH A WIN-WIN RELATIONSHIP.

“

GREAT SERVICE! We sincerely look forward to establishing a long-term business relationship with you, carrying out the related research, and accepting high-quality technical services and support from SHIMADZU.

”



**DR. ZHANG QINGHUA**  
DIRECTOR OF THE LABS

Dioxin Laboratory, Research Center for Eco-Environmental Sciences,  
Chinese Academy of Sciences  
**China**

“

SHIMADZU LCMS systems brilliantly simplify the ionization technique in a high-speed, accurate and precise way, making it simple for us to present the best solution. **WE ARE EXTREMELY SATISFIED WITH THE USER-FRIENDLINESS AND VERSATILITY OF THEIR INSTRUMENTS**, allowing us to analyze complex chemical mixtures of a large variety. SHIMADZU offers the excellent techniques of separation and molecular characterization through their liquid chromatograph and mass spectrometer.

”

**PROFESSOR MARCOS EBERLIN**  
PROFESSOR

Thomson Mass Spectroscopy Laboratory,  
Institute of Chemistry,  
University of Campinas  
**Brazil**





Japan's First Manned Balloon Flight. Launching the Balloon at Kyoto's Sento Imperial Palace.

# CONTRACT RESEARCH





# CONTINUALLY DISCOVERING IMPROVED TESTING METHODS

■ TO PROTECT PUBLIC HEALTH,  
MORE THAN EVER BEFORE.



“

The most important parameters for an MS in the CRO industry is sensitivity. Today, many molecules require very low limits of quantification as advised by the regulatory bodies. SHIMADZU LCMS OFFERS EXCELLENT SENSITIVITY WITH REPRODUCIBLE RESULTS EVEN FOR THE MOST CHALLENGING MOLECULES IN COMPLEX MATRICES. With the UFMS technology, SHIMADZU has underlined the importance and positive impact that speed can have on your LCMS method design.

”

**DR. SHIV PRAKASH**  
CHIEF EXECUTIVE OFFICER  
Synchron Research Services Pvt Ltd  
India

The Veeda Clinical Research Team



**DR. VENU MADHAV**  
CHIEF OPERATING OFFICER  
Veeda Clinical Research Pvt Ltd  
India

“

We were pleasantly surprised by the robustness and ruggedness of SHIMADZU's LCMS systems. Today we have over a dozen SHIMADZU UFMS in our laboratory. PROACTIVENESS, PROMPTNESS AND ABILITY TO MAKE THINGS HAPPEN, THAT IS SHIMADZU FOR US.

”

# ENVIRONMENT & FOOD





# PROTECTING YOUR WELL BEING

■ AND CREATING SAFER FOODS  
TO SUSTAIN THE EARTH'S ECOLOGY  
ONE TECHNOLOGY AT A TIME.



“

SHIMADZU instruments have significantly assisted in our research from environmental analysis to exposure assessment, risk assessment to health impact assessment as well as trace analysis developed and used for biological specimens. For instance, during surgery, SHIMADZU probe electrospray (PESI) prototype mass spectrometer effectively drives the physician to accurately identify surgical resection margins with a molecular-based assessment. Now the space dimension of surgical specimen is expected to transform this evaluation from a manual to an automatic procedure made possible by SHIMADZU, increasing objectivity and accuracy, producing long-term benefits to patients. As increasingly more samples must be taken for effective analysis, **WE ARE CONFIDENT THAT SHIMADZU WILL CONTINUE TO CREATE FASTER ANALYTICAL MACHINES WITH HIGH SENSITIVITY IN THE NEW EMERGING ANALYTICAL & CLINICAL RESEARCH CHALLENGE.**

”

**DR. ENRICO DAVOLI**  
HEAD, MASS SPECTROMETRY LABORATORY  
Environmental Health Science Department,  
IRCCS – Istituto Mario Negri  
Italy



“

The pre-sales consultations, after-sales technical service, and instrument training courses from SHIMADZU have helped our institute tremendously. **THE AFTER-SALES TECHNICAL SERVICE TEAM PROVIDED TIMELY RESPONSES AND GUIDANCE** to resolve any problems we encountered in our experiments. In conclusion, we appreciate the performance of SHIMADZU instruments and are satisfied with your instruments' operability and service. We look forward to the long-term service and support from the SHIMADZU team.

”

**MR. LIU SU**  
DIRECTOR

Vegetable Quality Supervision,  
Inspection and Testing Center,  
Ministry of Agriculture, Beijing  
**China**

**DR. LIU XIAOWEI**

DIRECTOR

Agro-Environmental Quality Control & Testing Center,  
Ministry of Agriculture, Tianjin

China



“

SHIMADZU instruments are highly sensitive and provide trace level analysis. The software workstation is customised and easy to operate, enabling our analysts to use the equipment proficiently. The pre-sales consultation, after-sales technical service and application training from SHIMADZU are also very helpful.

”

WE HIGHLY APPRECIATE SHIMADZU AND ARE VERY SATISFIED WITH THE PERFORMANCE OF THEIR EQUIPMENT.

We will work with SHIMADZU in the future and extend our long-term cooperation and support.

“

We are pleased with the  
HIGH-QUALITY PERFORMANCE FROM  
SHIMADZU IN BOTH HARDWARE AND  
SOFTWARE OPERATIONS.

Be it the pre-sales consultation or after-sales  
technical service, it has always been a pleasure  
working with SHIMADZU.

”

**DR. DU BING**

DEPUTY DIRECTOR OF THE LABS

National Research Center for Environmental Analysis and Measurement  
China

“

The specifications of SHIMADZU instruments, including sensitivity, reproducibility and stability, fully meet the requirements for all relevant standards. We like the user-friendliness of the software design which significantly reduces the training time needed for laboratory personnel. We are also pleased that the INSTRUMENTS ARE EASY TO MAINTAIN and the after-sales service team has been thoughtful and supportive.

”

**MR. JIA LIMING**  
RESEARCHER

Environmental Monitoring Center of Heilongjiang  
China





“

LCMS-8050 from SHIMADZU supports instrument parameters for over 300 pesticides which allows us to conduct the analysis and determine the level of pesticide residues efficiently. With our requirements being WELL TAKEN CARE OF BY THE AFTER-SALES TECHNICAL SERVICE TEAM, we are happy to continue working with SHIMADZU.

”

**DR. TANG TAO**

DEPUTY DIRECTOR OF THE LABS

Institute of Agricultural Products Quality Standard,  
Zhejiang Academy of Agricultural Sciences**China**

“

The sensitivity, detection limits and stability of SHIMADZU instruments meet all relevant standards, making it all easy for us to perform necessary analysis as required. Through training provided by technical engineers, our laboratory personnel are able to proficiently carry out the routine maintenance and troubleshoot any simple problems with the instruments. We have always appreciated the **TIMELY RESPONSE PROVIDED BY THE AFTER-SALES TECHNICAL TEAM** from SHIMADZU.

”



**DR. AI LIANFENG**

DIRECTOR OF THE LABS

Hebei Entry-Exit Inspection and Quarantine Technical Center

China



SHIMADZU Headquarters in Sanjo Works, Kyoto.

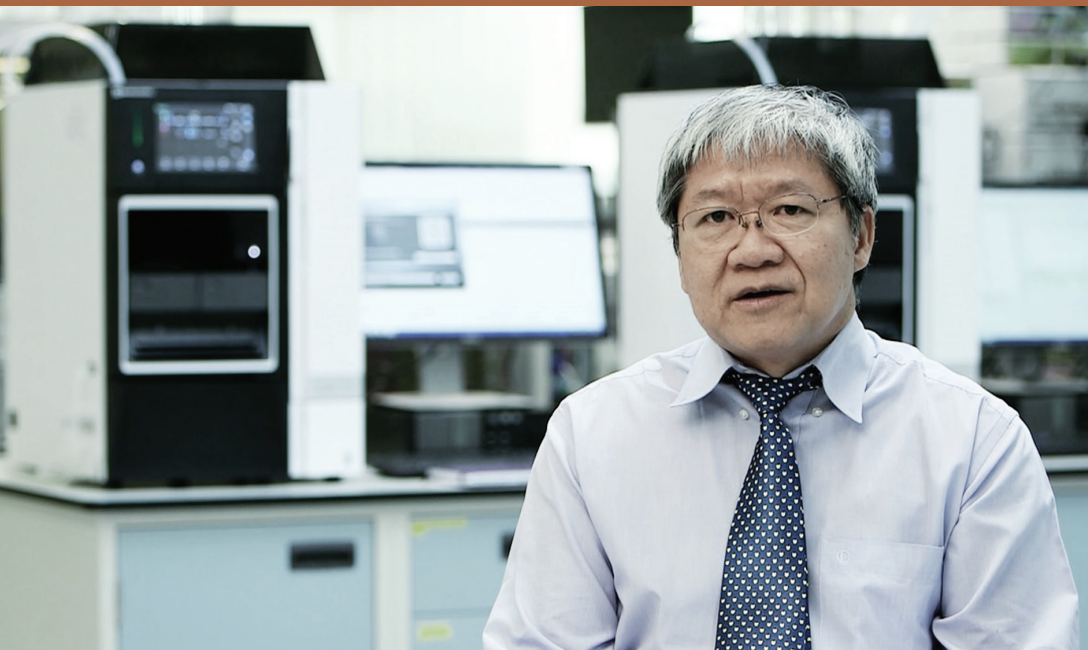
# FORENSIC





# MAXIMIZING FORENSIC EVIDENCE

- IN THE PURSUIT OF TRUTH,  
MAKING THE WORLD  
A SAFER PLACE FOR ALL.



**DR. MICHAEL TAY MING KIONG**  
SENIOR CONSULTANT FORENSIC SCIENTIST  
The Forensic Experts Group  
**Singapore**

“

The field of forensics throws up very different kinds of challenges. We are glad that SHIMADZU has been able to support us not only in terms of **WORLD-CLASS INSTRUMENTS**, but also after-sales support. We really love the unique features that SHIMADZU's latest instruments offer, such as minimal sample carryover. It is also very easy to train our staff on SHIMADZU instruments. Due to their easy operability, our staff is able to gain proficiency in a short period of time.

”

**MR. BIRENDRA SHAKYA**

SENIOR SCIENTIST

National Forensic Science Laboratory  
Nepal

“

SHIMADZU's Gas Chromatograph Mass Analyser has been providing us extensive support for our organisation ever since it was installed.

**WE ARE UTMOST SATISFIED WITH SHIMADZU  
AND THE SERVICES PROVIDED BY THEM.**

We wish the company will always keep up its best work.

”

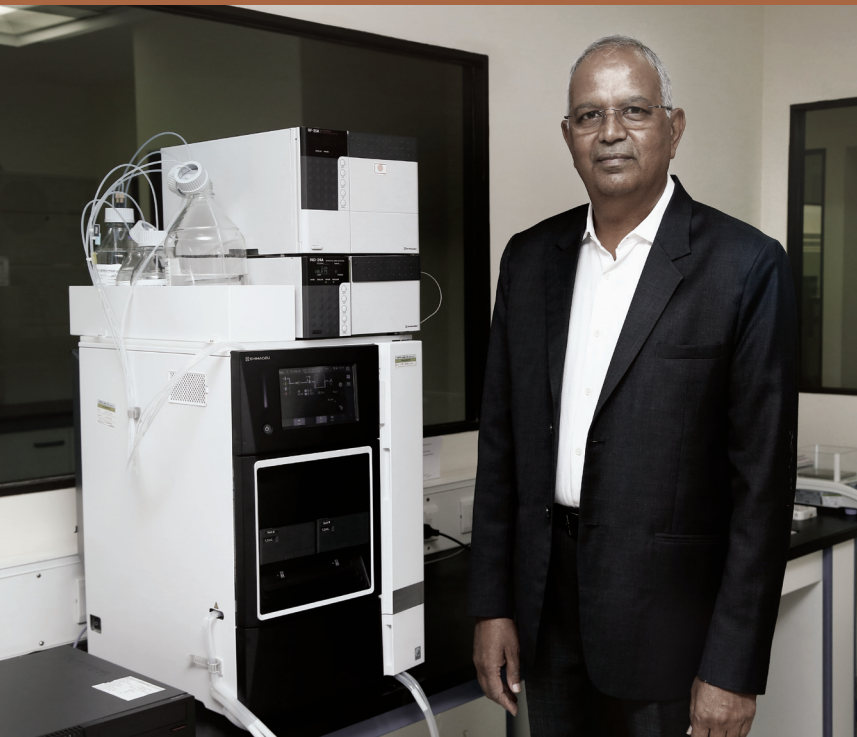
# MATERIAL





# EXPLORING THE STRUCTURES & MECHANICS

■ OF MATERIALS IN  
UNDERSTANDING THE BUILDING  
BLOCKS OF THE WORLD.



“

SHIMADZU has been offering most of the technologies required for our laboratory, thus helping us to standardize with one technology partner across the company. Most of the technologies from SHIMADZU are comparable with other leading brands and some are even better.

CUSTOMER SUPPORT AND SERVICE HAVE BEEN GREAT.

”

**DR. VASI REDDY**  
CHAIRMAN

Vimta Labs Ltd  
**India**

“

We have been using SHIMADZU's products at PI Industries in Udaipur, India, for more than 10 years. We really like the robust design and precision of the instruments. The hardware is quite good and meets the required industry standards. I also appreciate the fact that COMMUNICATION IS ALWAYS VERY SMOOTH WHEN DEALING WITH SHIMADZU.

”



**DR. R.S. SURESH**  
HEAD OF RESEARCH AND DEVELOPMENT  
PI Industries Ltd  
India

“

We have been using SHIMADZU instruments since 1989 for QC and R&D in Pharma, Agro, Fine Chemicals. SHIMADZU instruments are rugged, user-friendly, and compact with EXCELLENT SOFTWARE FUNCTIONS. We have achieved good reliability in QC and the instruments have also helped us develop fool-proof quality plan in R&D. We have achieved Qual-Cost through technology. We are very fascinated by SHIMADZU's software capabilities since the beginning. For example, SHIMADZU's C-R4A Integrator had the capability of calculating the system suitability functions way back in the 1990s. Among the latest technologies, I like the UPLC technology the most. We have also set up a new R&D with SHIMADZU's technology and expect to have many more techniques in our portfolio.

”

**MR. JOY PAIZA**  
VICE PRESIDENT

JDM Scientific Research Organization  
India





“

Kaneka has been using SHIMADZU instruments since the start of business in 1979 and WE HAVE NOT LOOKED AT OTHER VENDORS EVER SINCE. We have several SHIMADZU instruments such as FTIR, GC, HPLC, IR and UV-Vis Spectrophotometer, all of which are used for quality control testing. The instruments are easy to use and are able to perform the tests required by our customers from various parts of the world.

”

**MS. JANET NGING**

SENIOR MANAGER

Quality Assurance Department,  
Kaneka Singapore Co. (Pte) Ltd.**Singapore**

“

Since 1984, Petrochemical Corporation of Singapore (PCS) has been using SHIMADZU GCs to monitor trace impurities and determine purity of our petrochemical plant process stream samples. In PCS's laboratory, we have more than 30 units of SHIMADZU GCs equipped with different types of detectors.

### SHIMADZU GC SYSTEMS CAN BE DESIGNED TO SUIT OUR APPLICATIONS.

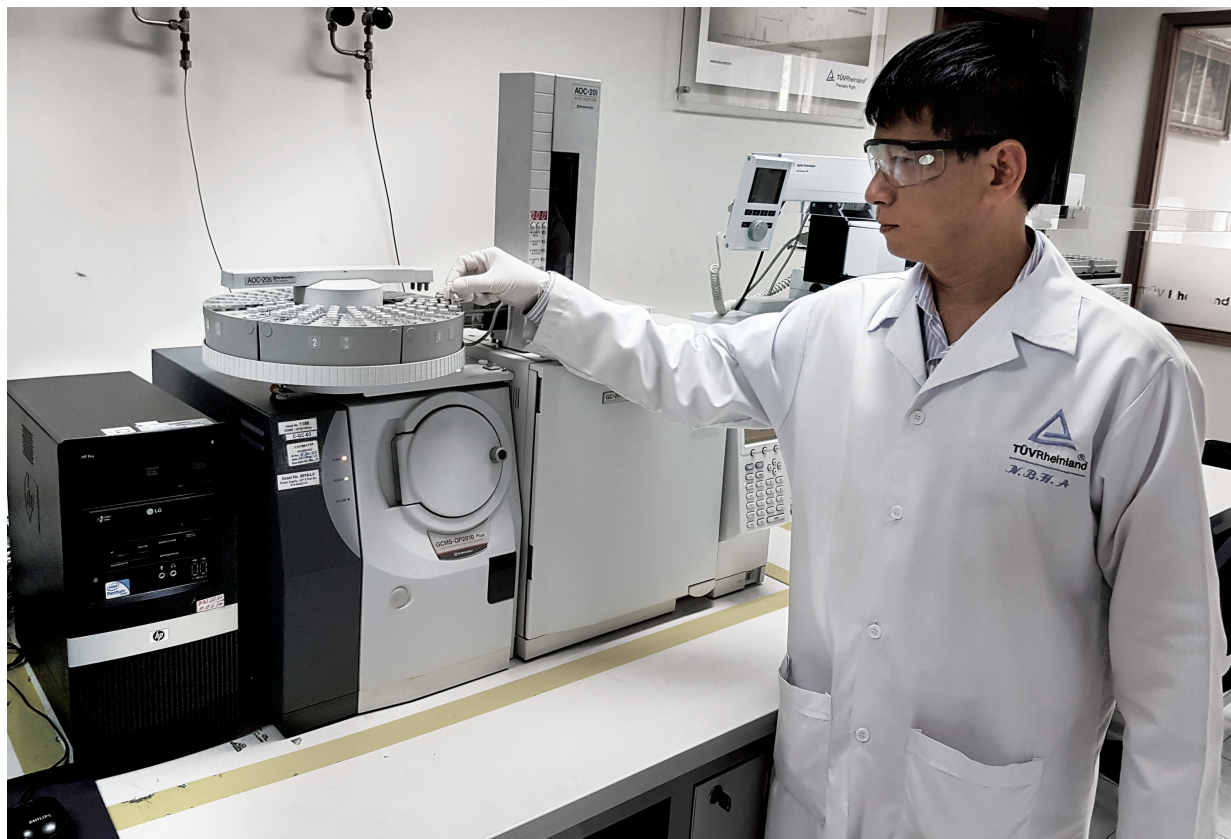
It has the flexibility of incorporating any type of column (packed or capillary columns including, glass columns) with integrated multiple valves systems and detectors to meet our GC operation requirements. SHIMADZU's Advanced Flow Technology for multi-dimensional system, back-flush and detector splitting systems are of acceptable performance. The software is user-friendly and allows for easy data analysis and management. Furthermore, sales and technical support teams are prompt in response.

”

#### MR. FOO SIN CHARM SUPERINTENDENT

Quality Control & Quality Assurance Department,  
Petrochemical Corporation of Singapore (Private) Ltd  
**Singapore**





“

We are always on a lookout for instruments that are **EFFICIENT, EASY TO USE AND EASY TO MAINTAIN.**

We did a lot of research at our end and found SHIMADZU to meet all of our parameters. We are very happy with the performance of the instruments and will continue to work together with SHIMADZU in the long run.

”

**DR. NGUYEN HOAI ANH**  
DIRECTOR, SOFTLINES LABORATORY,  
LOCAL FIELD MANAGER  
TÜV Rheinland Vietnam Co., Ltd.  
**Vietnam**

# PHARMACEUTICAL





# DEVELOPING STATE-OF-THE-ART TECHNOLOGY & CUTTING-EDGE INNOVATIONS

■ TO REDEFINE  
TOMORROW'S WORLD, TODAY.

“

In my work, I aim to use the iMScope TRIO to examine the distribution of pharmaceutical candidate compounds in animal organs and tissue, and evaluate fluctuations in endogenous substances, biomarkers, and so on. SHIMADZU instruments have helped us considerably in our work.

WE ARE VERY HAPPY WITH  
THE ACCURACY OF SHIMADZU  
INSTRUMENTS.

”

**DR. HIDEFUMI KAJI**  
GROUP MANAGER

DMPK Research Laboratories, Research Division,  
Mitsubishi Tanabe Pharma Corporation  
**Japan**



“

Any scientist that uses the latest analytical instruments will always like new technology. I was initially attracted to the Prominence-i for this fact and it offers one-step access to the sample vials. In my previous job, I used instruments from other manufacturers, but there were a lot of things you couldn't do with them, and a lot of restrictions. With SHIMADZU, at the maintenance training session, we were taught how far we could disassemble the instrument and that if we identified certain phenomena, they would not be wrong. Moreover, **THE COMPACTNESS OF THE PROMINENCE-i MAKES IT A GOOD CANDIDATE FOR FUTURE EXPANSION** as we will be able to install a greater number of units in the same space.

”



The Banyko Pharmaceutical Co., Ltd. Team

**MR. TAMOTSU ONISHI**  
SECTION LEADER

Quality Assurance Section, Quality Control Department,  
Banyko Pharmaceutical Co., Ltd.  
Japan



**DR. NANDKUMAR CHODANKAR**  
MANAGING DIRECTOR  
ASolution Pharmaceuticals Pvt Ltd  
India

“

The products and technologies offered by SHIMADZU are one of the best for the drug product and substance development and routine testing during manufacturing. SHIMADZU gives special emphasis in offering carefully-selected instruments for the particular application based on the analytical challenges during product development, and also help in upgrading the existing systems. Besides the best technologies and instruments, SHIMADZU builds long-lasting relationship with the customers. In fact, they become real partners in the drug development life cycle, offering above par technical assistance.

THE SHIMADZU TEAM IS JUST A TELEPHONE CALL  
AWAY FOR CUSTOMERS IN TIMES OF NEED.

The trainings that the team regularly conducts and the technical support offered, gives an edge over all other similar brands of instrument manufacturers. The relationship that ASolution relishes with SHIMADZU is nothing less than a close family.

”

“

We have been using SHIMADZU analytical and preparative HPLC, GC, GCMS, Spectrophotometer systems as well as LabSolutions CS Network in our ADL and QC labs. These systems deliver reproducible performances and the software solutions are meeting the regulatory compliances. This enables us to address the stringent audit requirements with confidence. SHIMADZU technologies at Strides Shasun are utilized 24/7 in all our labs. The robust performance and high sensitivity detection capabilities have helped our scientists in their research. We find **SIGNIFICANT PRODUCTIVITY ENHANCEMENT WITH THE i-SERIES RANGE OF HPLCs** from SHIMADZU due to the high throughput and automation provided by these new industry standard HPLCs.

”

**MR. ABHAYA KUMAR**

DIRECTOR

Strides Shasun Limited  
India

“

We at Divis, are always looking to enhance our data security and integrity features for our compliant lab. LABSOLUTIONS CS IS CATERING PERFECTLY TO MEET ALL OUR REGULATORY NEEDS.

”

**MR. ABBURI SREEDHAR RAO**  
ASSISTANT GENERAL MANAGER  
Divis Laboratories Ltd  
India





“

In my opinion, SHIMADZU has come up with good technological improvements. As per my experience with SHIMADZU, we are very much satisfied with all types of support. Service support is very good and cannot be compared with any other vendors. Most of the time **SUPPORT IS PROACTIVE** or satisfactory to our expectations and we don't have to wait for it. All the SHIMADZU instruments we have in lab are performing well as we expected.

”

**DR. PRITESH R. UPADHYAY**

SENIOR VICE PRESIDENT

Analytical Research,  
Lupin Limited  
**India**



**MR. IRFAN HASSAN KHAN**  
DIRECTOR, QUALITY OPERATIONS  
Brookes Pharma (Private) Limited  
Pakistan

“

Being a pharma professional for more than 30 years, I have been using SHIMADZU technologies and instruments in different national & multinational pharmaceutical organizations including Brookes Pharma (Private) Limited. For more than 25 years, SHIMADZU has always been our choice for instruments such as the HPLC, GC & UV Spectrophotometer. With SHIMADZU technology as advanced as any other international brands, we can perform any critical analytical activity with  
**PREMIER LEVEL OF CONFIDENCE AND SATISFACTION  
WHEN IT COMES TO PRECISION AND ACCURACY.**

Along with having all compliance options, the instruments are more user-friendly as compared to other brands. Based upon our utmost satisfaction with SHIMADZU, Brookes Pharma recently acquired the latest models of GC, TOC and the biggest package deal in Pakistan Pharma industry, including 8 HPLCs having 10 HPLCs Detectors along with the fully CFR compliant CS networking solution. Furthermore, we are very pleased with the unconditional backup support from SHIMADZU's long-term partner too.

”



Anthem has been working with SHIMADZU since its very beginning. Certain features offered by SHIMADZU are just priceless and are very well-suited to our requirements. Whether it is the high throughput, in-built self validated protocols in the latest instruments, ease of operation, ability to adopt different methods or easy method switching,



SHIMADZU ALWAYS LIVES UP TO OUR HIGH EXPECTATIONS.



**MR. RAVINDRA CHANDRAPPA**

CHIEF OPERATING OFFICER

Anthem Biosciences Private Limited

India

“

We feel that LABSOLUTIONS CS IS EXTREMELY GOOD AND MEETS ALL REQUIREMENTS ASSOCIATED WITH FDA 21 CFR PART 11. Furthermore, the support from SHIMADZU and its partners is excellent with short turnaround times. LabSolutions CS has enabled us to pass the U.S. FDA and other regulatory audits with confidence.

**DR. VENKATESAN CSV**

VICE PRESIDENT

Research & Development,  
Gland Pharma Limited

**India**

”



“

Over the years we have partnered with SHIMADZU in fulfilling our laboratory needs. SHIMADZU's pre-sales and post-sales have been instrumental in successfully developing and operating our laboratories at the highest level of satisfaction.

ADVANCED SOFTWARE, EXCELLENT TECHNICAL SUPPORT AND EASE OF USE MAKES SHIMADZU PRODUCTS UNIQUE as compared to any of its competitors.

”

**MS. SAEEMA SHAHID**  
HEAD, QUALITY CONTROL  
ATCO Laboratories Limited  
Pakistan





“

Berlin Pharmaceutical has been using SHIMADZU's products for the past 10 years for the analysis of our products. We still use these machines extensively till today with good performance. We feel comfortable with SHIMADZU's user interface. It's very easy to use and a new user also finds it easy to learn in a short period of time. Our FAVORITE PART OF SHIMADZU INSTRUMENTS IS WHEN THE NETWORK SYSTEM FOR MANAGER MONITORING WORKS WITHOUT GOING TO LAB. This is a very useful function for us. Because we always want to know the exact timeline of any analysis result. In addition, communication with SHIMADZU has been very timely.

”

**MRS. LALANA SETASUBAN**  
SENIOR VICE PRESIDENT  
Berlin Pharmaceutical Industry Co., Ltd.  
Thailand

**DR. NGUYEN NGOC VINH**

DIRECTOR

Institute of Drug Quality Centre (Ho Chi Minh)

Ministry of Health

**Vietnam**

We have been using SHIMADZU instruments since the year 2000 and we are very pleased with the way they develop state-of-the-art innovations each year, particularly the recent mass spectrometry technology. We have many SHIMADZU analytical instruments in our institute, from very basic UV-spectrophotometer to the LC/GC, and in recent years the LCMS-8040 and LCMS-IT-TOF. Being an important institute for drug quality control in South Vietnam, we always seek to choose instruments that are high in sensitivity, throughput and robustness.



SHIMADZU INSTRUMENTS NOT ONLY OFFER EXCELLENT DURABILITY  
BUT ALSO SUPERIOR PERFORMANCE COMPARED TO ITS PEERS.

**MR. TEKAD AGUSTONO**

PLANT MANAGER

PT. Interbat Pharmaceutical Industry  
Indonesia



We have a wide range of SHIMADZU instruments ranging from the Prominence-i to Nexera XR, from GC-2010Plus to UV VIS. SHIMADZU'S PERFORMANCE HAS ALWAYS BEEN GREAT.

From our experience we would specially like to commend SHIMADZU for its durability and its ease to manage. We highly recommend SHIMADZU instruments and look forward to working with SHIMADZU in the future.





“

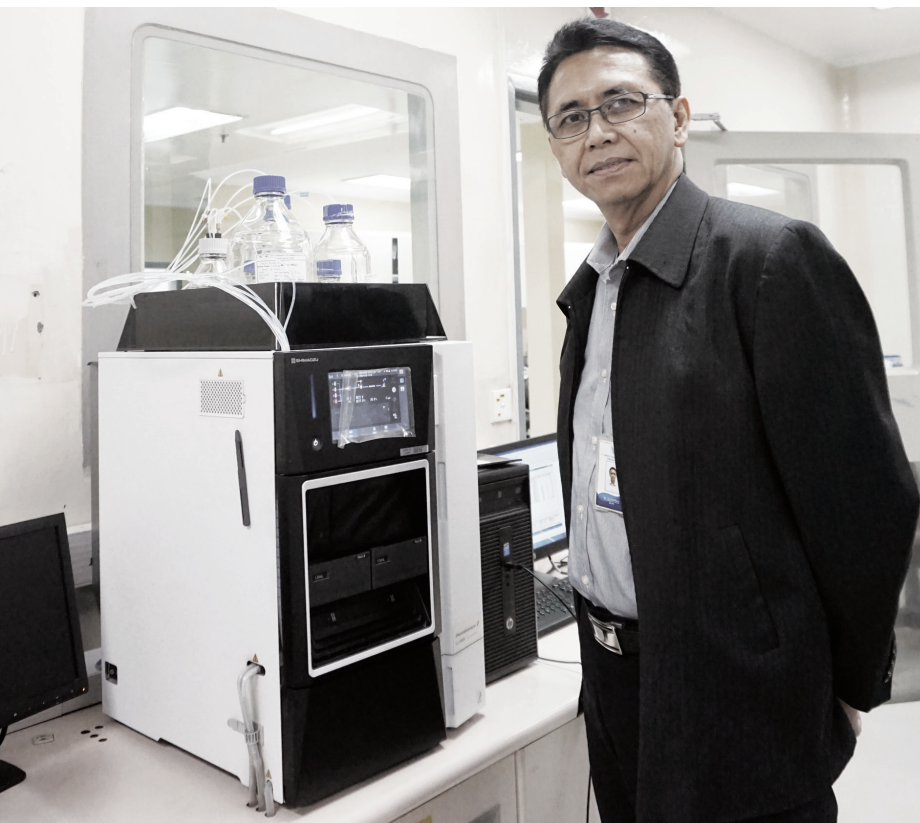
We have been using SHIMADZU instruments for the past 15 years. We found that the instruments are robust, highly sensitive and very user-friendly. The service and the response of the company for all types of queries are excellent. We will highly recommend SHIMADZU for those who need **GOOD INSTRUMENTS WITH HASSLE-FREE SERVICE SUPPORT.**

”

**MR. RAKESH JHA**  
DEPUTY GENERAL MANAGER

Quality Control,  
Nepal Pharmaceuticals Laboratory Pvt. Ltd.  
**Nepal**

**MR. MOHAMMAD SUMARNO**  
TECHNICAL OPERATIONS DIRECTOR  
PT Taisho Pharmaceutical Indonesia Tbk.  
**Indonesia**



“

Taisho's philosophy to 'contribute to society by creating and offering superior pharmaceuticals and health-related products', is very similar to the philosophy of SHIMADZU. We have thus chosen SHIMADZU instruments to support us in managing and securing good quality control for each product we manufacture.

SHIMADZU HAS ALSO HELPED US TO SUCCESSFULLY PASS AUDITS FROM BOTH OUR OVERSEAS PARTNERS AND DOMESTIC REGULATORY BODIES.

”

“

I was first introduced to SHIMADZU by their business partner in the eighties. Since then, both in IICT and AVRA, I have enjoyed their customer focus for over 35 years. **THEY REPRESENT A TRUE EVOLUTION OF INNOVATION AND TECHNOLOGY WITH SERVICE EXCELLENCE.** We appreciate the extensive validation and network compliance support extended to succeed the U.S. FDA audit. I fondly recollect the visit of Nobel Laureate in Chemistry (2002), Koichi Tanaka-san from SHIMADZU Japan to our facility. Today, SHIMADZU is well respected for its leadership in Mass Spectrometry & MALDI solutions. As a user of over 70+ SHIMADZU chromatograph, spectrometer and mass instruments, we are proud to be in a trusted and dependable relationship with SHIMADZU and their partner.

”



**PADMA BHUSHAN DR. A.V. RAMA RAO**  
FOUNDER, CHAIRMAN & MANAGING DIRECTOR

Avra Laboratories Pvt Ltd  
India





“

OUR CUSTOMERS  
CAN COUNT ON US.  
NO PLACE IS TOO FAR.

”

“ DEDICATED TO MAKING THE BEST FOR OUR CUSTOMERS ”

- SHIMADZU

This book is a symbolic milestone of a relentless journey we have embarked on together. SHIMADZU wishes to extend a very special THANK YOU to all our customers, partners and colleagues who made this book a reality.

