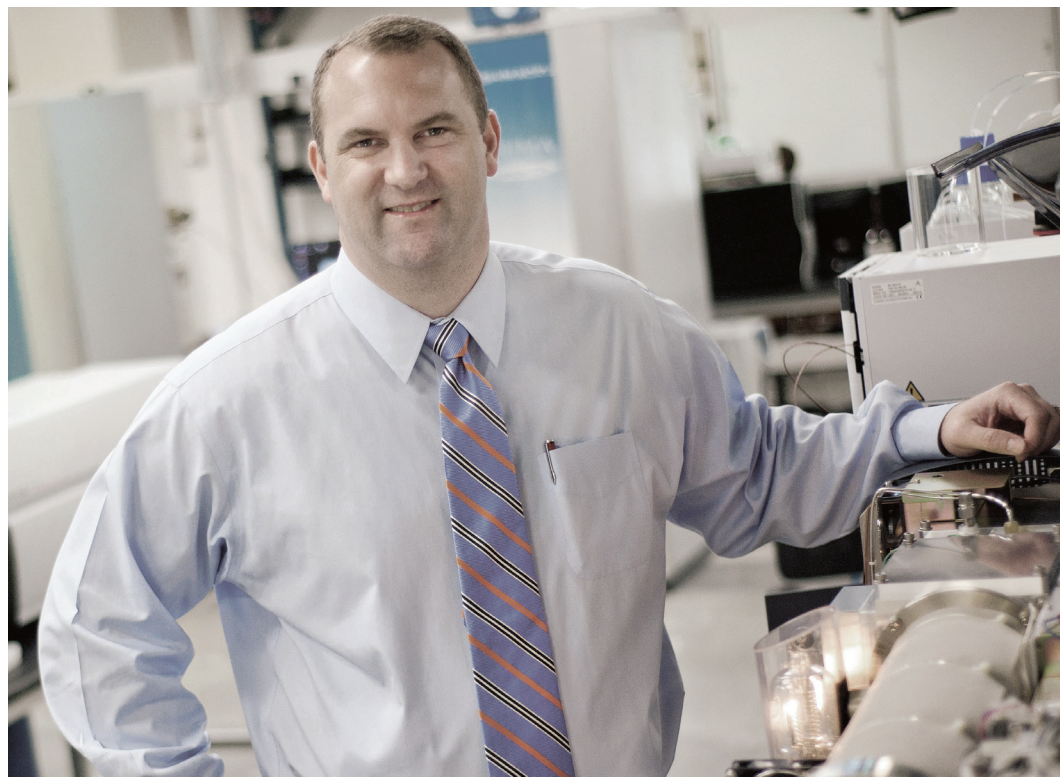


“

My interactions with SHIMADZU began way back in 2000, when I was a graduate student at Virginia Tech. Our analytical group, headed by Prof. Harold McNair, regularly administered American Chemical Society short courses in gas chromatography, liquid chromatography, sample preparation and other topics. I completed my dissertation research on the topic of adduct ion formation in electrospray ionization, using a SHIMADZU QP-8000a single quadrupole mass analyzer. In 2007, when I joined the faculty at the University of Texas at Arlington (UTA), we acquired an LCMS-IT-TOF through the SHIMADZU Equipment Grants for Research Program. It was one of a handful of such systems available in the country, so **WE HAD A UNIQUE OPPORTUNITY TO PERFORM CUTTING EDGE RESEARCH THAT OTHERS COULD NOT**, based on the powerful features of the instrument. Soon after, we established the SHIMADZU Center for Advanced Analytical Chemistry and the SHIMADZU Institute for Research Technologies at UTA.

”



DR. KEVIN A. SCHUG
DIRECTOR

Department of Chemistry & Biochemistry,
University of Texas at Arlington
USA